

WCID110 SPECIAL EDITION



# RECYCLING NEWSLETTER



## WHY IS RECYCLING A FOCUS FOR 2024

In 2023, the WCID110 Board noticed a drop in the overall participation in the recycling program offered through Best Trash. After reviewing monthly tonnage reports, analyzing data from Best Trash related to the amount of recyclable waste actually being recycled in plants vs. transported to landfills, WCID110 wants to renew our commitment to promoting and expanding the use of recycling within our District. This is something that is important to our Board and to our environment.

Recycling services provided by Best Trash are as simplified as they can make it. The goal is for all residents to be able to recycle as much material as possible so it can be sent to a recycling plant and not sent to a landfill. Anything that can be recycled goes in the same bin...YOU DON'T HAVE SORT IT YOURSELF!

All residents are able to get one free recycle tote bin from the WCID110 Admin Office (located inside the Forest Oaks Clubhouse). Residents can purchase a 50-gallon wheeled recycling cart for \$75 or a replacement tote for \$15 from WCID110 or you can purchase your own recycling can on their own. If you choose to buy your own, the container must be clearly marked as recycling but it does NOT need a Best Trash sticker.



## HOW EASY IS IT TO RECYCLE IN WCID110 WITH BEST TRASH?



# HOW TO RECYCLE IN WCID110

## RECYCLE TOTE/BIN/CAN/CLEAR PLASTIC BAG

You do **NOT** have to separate your recyclable materials. Just place them all in your container and make sure it is placed in the correct location by 7 a.m. on Saturday mornings for pick-up. Best Trash asks that your container be placed within 3' of the curb and that it is visible and unobstructed, meaning it can be easily accessible for the crew. If you are bagging recyclables, the bag **MUST** be clear or it will not be picked up. Since trash pick-up also happens on Saturdays, make sure they are clearly separated from each other.

## WHEN DOES RECYCLING GET PICKED UP?

Best Trash collects recyclables on Saturdays. Containers must be placed in the correct location by 7 a.m. to ensure they are picked up by the crews. WCID110 is picked up between 7 - 11:45 a.m. on Saturdays but the exact times do change depending on the number of residents recycling, total tonnage in a vehicle and if they have to make a trip to drop off a load, and other factors that are outside of the control of WCID110. A good rule of thumb is to have your stuff out the night before or by 6:45 a.m. on Saturday and it should be picked by no later than noon. If your recycling is not outside when the crew comes by, you will have to wait until the next week for it to be picked up.

## BEST TRASH FAQ'S



## HOW MUCH RECYCLING CAN YOU HAVE OUT?

There is no limit on how much you can have out to be picked up. We do ask that you have all your recyclables in a container that is clearly marked as recycling or clear plastic bags. You may request a recycling logo sticker from Best Trash by emailing them at [info@rrrtx.net](mailto:info@rrrtx.net), but it is not a requirement. The recycling stickers will be mailed to your address, free of charge.

**THE GRAPHIC BELOW IS NOT ALL INCLUSIVE, SO PLEASE CHECK THE BEST TRASH FAQ'S FOR QUESTIONS ABOUT SEPCIFIC ITEMS.**

# #RECYCLERIGHT



## Recycle these:

Glass bottles & jars



Empty and rinse

Aluminum & Steel Cans



Empty and rinse

Paper



Mixed paper, newspaper, magazines, clean and flattened cardboard

Food & Beverage Cartons



Empty and replace cap

Plastic Bottles, Jugs & Tubs



Whipped topping, dips, yogurt, butter, sour cream, jello, pudding & fruit cup containers. Empty and replace cap

Cups



Disposable paper, plastic and aluminum cups. Throw lids in trash

## NOT these:



No lightbulbs



No batteries or electronics



No ceramics, mirrors, pottery, or china type items



No food or liquid (empty all containers)



No hoses, wires, chains or electronics



No paint, oil, hazardous materials, chemicals, or pesticides





# MYTHS ABOUT RECYCLING PLASTICS

**Myth #1:** Plastic doesn't really get recycled.

**Fact:** Plastic bottles, jugs, containers and tubs are widely accepted for recycling in communities across the country, and there is strong demand for these materials.

**Myth #2:** Anything plastic can go in your recycling bin.

**Fact:** Know what to throw. Generally, plastic bottles with necks or handles, or plastic containers and tubs are recyclable in your curbside container.

**Myth #3:** Plastic grocery bags can be recycled curbside.

**Fact:** Plastic bags require special handling to be recycled. Place all bags into one bag and then place in your bin. Don't put loose bags in your bin. You can also return them to collection bins at the grocery or Lowes/Home Depot/Target in our district.

**Myth #4:** You should bag your recyclables.

**Fact:** Recycle bins or totes are preferred, but clear/transparent bags are accepted. If a bag is used that isn't clear/transparent is used for recycling, it will not be picked up. If you have never picked up your free recycle tote from WCID110, now is a good time to come and get it!

**Myth #5:** Anything with a recycling symbol should go in your recycling bin.

**Fact:** The "chasing arrows" symbol generally identifies the type of plastic used in a container or indicates that an item contains recycled content, but it does not always mean that an item is recyclable. Check Best Trash, WCID110, or google if you aren't sure.

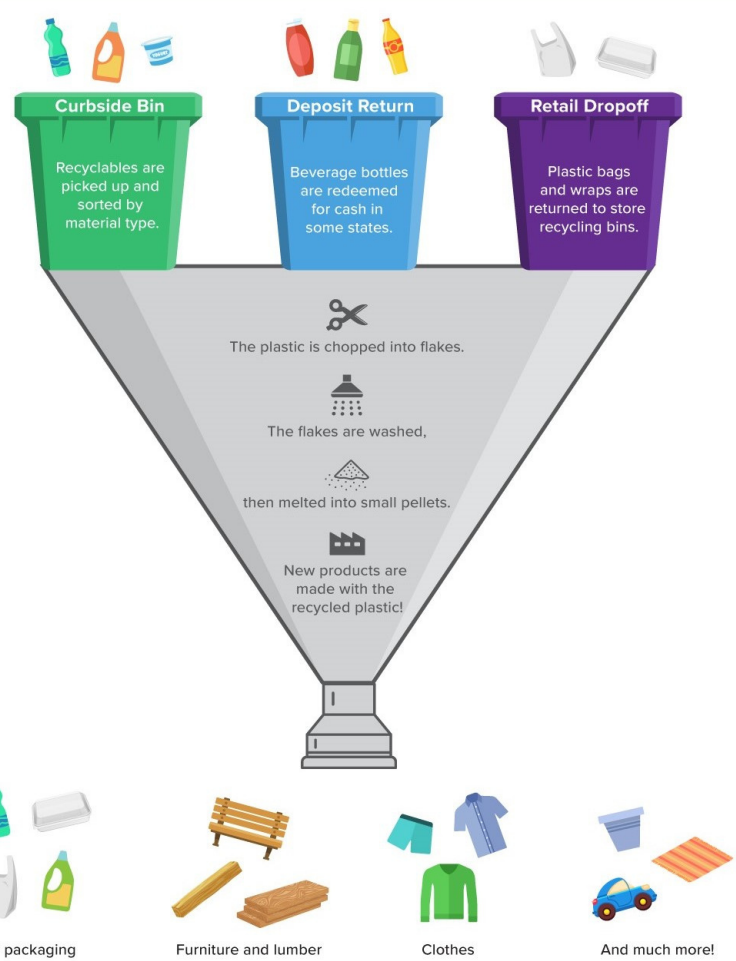
Did you know that recycling doesn't end at the bin? In fact, that's just the beginning! When you buy products made with recycled content, you're giving your recyclables a new life. Here's how it works.

## HOW DO MY RECYCLED PLASTICS TURN INTO NEW PRODUCTS?

All recycling materials collected by Best Trash are taken to a certified facility called Independent Texas Recyclers located at 6810 Irvington Blvd. in Houston.

All materials are sorted in that facility and anything found to not be able to be recycled are removed and taken to a landfill.

We do not receive reports about the percentage of materials that are accepted vs. taken to a landfill. Best Trash encourages to continue to put materials you aren't sure about in your recycle bin anyway!



Recycled products are all around you. Every time you go shopping, you can choose recycled to help the planet and support green jobs.

Look for labels like "made with recycled content" or "contains recycled plastic". "Postconsumer content" is the best. That guarantees the recycled plastic came from homes and businesses, like yours!



# Learn About Recycling and Recycling Trucks

Check out this video explaining more about how recycling is handled by Best Trash North. This video is 27 minutes long and could be a good watch with kids to educate them about how recycling is handled.



**1** The EPA estimates **75%** of the American waste stream is recyclable – but we only recycle about **30%** of it!



**2**



Only about **25%** of the plastic produced in the U.S. gets recycled<sup>2</sup>

**3** The U.S. produces **8.4 million metric tons** of polypropylene plastic annually<sup>2</sup>...



**4**  
...BUT only **1%** gets recycled in the U.S.<sup>6</sup>

**5**

One ton of recycled plastic saves:

- 5,774 kW of electricity
- 685 gallons of oil
- 98 million BTUs of energy<sup>2</sup>



## Here's What Those Plastic Recycling Numbers Mean



**PET / PETE**  
Polyethylene terephthalate



**HDPE**  
High-density polyethylene



**PVC, Vinyl**  
Polyvinyl chloride



**LDPE**  
Low-density polyethylene



**PP**  
Polypropylene



**PS**  
Polystyrene



**Miscellaneous**  
Polycarbonate and more



Want to learn more about what plastic recycling numbers mean? Use the QR code below to get more information about what those numbers mean.







## HOW TO DISCARD SPECIFIC ITEMS THAT SHOULDN'T BE RECYCLED OR TRASHED



Used paint cannot be recycled. Used paint can be discarded properly with garbage by opening the can, allowing the paint to harden completely (adding sand or kitty litter is recommended), and leaving the lid off. If paint can lids are left on, they will not be picked up.



Do not pour cooking oil down your sink drains. That could lead to expensive damages in your home. Use tin foil or a container to collect unused oils and allow it to dry completely, then discard it in the garbage or take to HCHWC.



Used motor oil should not be discarded in your recycling or garbage materials. Used motor oil can be taken to HCHWC and is accepted at Advance Auto Parts located at 150 Cypresswood Dr.



Hazardous waste should not be discarded in your recycling or garbage materials. Any hazardous waste should be taken to HCHWC.

## Harris County Hazardous Waste Collection (HCHWC)

Residents of Harris County are eligible to dispose of hazardous materials by appointment with the [Harris County Hazardous Waste Collection](#) (HCHWC). The facility is located at 6900 Hahl Rd., Houston, TX 77040.

To schedule an appointment for this FREE service, call 346-286-4299. Appointments are available on Tuesdays, Wednesdays, and the 2nd and 4th Saturdays of the month.

### HCHWC Accepted Materials:

- Aerosols - except for freon and mace
- Automobile products such as gas and motor oil, used oil filters and other components
- Batteries - up to car-battery size
- Light bulbs - compact fluorescents and tubes
- Oils - fats and grease
- Paints
- Fire extinguishers
- Household cleaners
- Chemicals – pool, fertilizers, and pesticides
- Propane cylinders
- Tires - up to five per visit
- Thermometers - items containing mercury



# Bright Ideas for Recycling Lightbulbs

Did you know that some light bulbs contain mercury, a chemical element that can be hazardous to your health and the environment?

Fluorescent bulbs (which can include the tubes that light up your garage, CFL bulbs, HID lamps, bug zappers, black lights, and neon lights) contain small amounts of mercury and require care when disposing of them—especially if they broken. Those types should be disposed of at a hazardous waste facility and NOT put in your trash or recycling materials.

Other types of old or broken bulbs, including incandescent, halogen, and LED, can be disposed of in your regular trash. If you're tossing them in your trash, please put the bulbs in a protective container, like an old cereal box, to prevent broken bulbs from tearing open trash bags or causing injury.



A compact fluorescent lamp, also called CFL, is an energy-saving light and compact fluorescent tube. These have become more and more common for use as they tend to last longer. **These types of bulbs can be recycled at our local Home Depot located off of Holzwarth Dr.** They have a collection area in the front of the store so just ask one of their associates.

## BATTERY BASICS

Batteries contain reactive chemicals and metals that generate electrical energy. Recycling these valuable materials helps protect the environment. There are two main types of batteries, single-use and rechargeable. Single-use batteries only work for a limited amount of time. Single-use alkaline batteries are considered nonhazardous and they can be thrown away in the trash. Rechargeable batteries are more expensive but can be charged many times so you can use them over and over. So if you have electronics that go through a lot of batteries (like video game controllers, NEST alarms, kids toys), it may be worth the higher expense for rechargeable batteries vs. single-use in the long run.

The types of rechargeable batteries in use include lithium-ion and nickel-cadmium. Other types are nickel-metal hydride, nickel-zinc and small sealed lead batteries. The toxic metals used in these batteries can hurt the environment if thrown away. Recycling companies dispose of the components of rechargeable batteries properly. The metals and chemicals don't end up in streams and landfills.

The Home Depot has partnered with Call2Recycle, a nonprofit battery recycling program. Rechargeable batteries can be dropped off in Call2Recycle bins at the store. Any rechargeable battery that weighs up to 11 pounds and is under 300 watt hours is accepted. There's no charge for recycling those batteries at The Home Depot. Some battery manufacturers and recycling facilities have mail-in programs. Before mailing batteries, be sure to follow postal shipping precautions.

Rechargeable batteries can also be recycled at our E-Waste Recycling events hosted by WCID110 and Best Trash. The next one is Saturday, April 13 from 10a-noon.





# WCID110 BUSINESSES



## THE HOME DEPOT

20131 IH45, SPRING, TX 77388

The Home Depot has recycling bins located in the front of the store and they accept the following items:

- Lead-acid batteries
- Rechargeable batteries
- CFL lightbulbs
- Plastic planter boxes
- Plastic plant pots

## LOWES HOME IMPROVEMENT WAREHOUSE

20201 N IH45, SPRING, TX 77388



Lowes has recycling bins located in the front of the store and they accept the following items:

- Plastic bags
- Cellphones
- Plastic planter boxes
- Plastic plant pots



TARGET



## TARGET

19511 IH45, SPRING, TX 77388

Target has recycle bins located near the front of the store and hosts used child car seat drives on an annual basis.

- Plastic bags
- Plastic and glass bottles and cans
- Cell phones
- Check their website for info on car seat events.
- Used ink cartridges
- Used MP3 players

## ADVANCE AUTO PARTS

150 CYPRESSWOOD, SPRING, TX 77388



Advance Auto Parts accepts the following items at our local store:

- Used motor oil
- Used oil filters
- Used vehicle coolant
- Used/dead car batteries

THIS IS NOT AN EXHAUSTIVE LIST OF EVERY BUSINESS IN WCID110 THAT ACCEPTS CERTAIN TYPES OF RECYCLABLE MATERIAL BUT IT IS A START. FEEL FREE TO SHARE OTHER BUSINESSES THAT ACCEPT SPECIFIC ITEMS BY EMAILING US AT [OFFICE@HCWCID110.COM](mailto:OFFICE@HCWCID110.COM)

# WCID110 RECYCLE SURVEY HIGHLIGHTS

## ➤➤➤ OVERALL RESULTS

- 151 Surveys were completed from residents within the District
- 97% of respondents are homeowners
- Over 50% have been in their homes for 4-20 years
- 86% of respondents have 1-4 people in their homes

## ➤➤➤ BASIC RECYCLING INFORMATION

- 90.1% of respondents DO participate in our curbside recycling service from Best Trash North
- 85.4% responded YES to having knowledge and information about recycling to be effective.
- 91.4% responded that trucks being branded as recycling does NOT create issues for them.
- 82.2% responded VERY SATISFIED or SATISFIED with the recycling service.
- 80.8% responded they recycle WEEKLY.

## ➤➤➤ RECYCLABLE MATERIALS

Most common items recycled:

- Cardboard / boxes
- Plastic containers and bottles
- Glass bottles and jars
- Aluminum and tin cans
- Magazines and junk mail

When unsure if an item can be recycled, respondents said they would:

- 51% throw it away
- 41.1% check WCID110 website
- 21.2% google it

Only 20% of respondents have participated in an e-waste recycling event.

## ➤➤➤ COMMENTS AND SUGGESTIONS

The amount of open ended responses we received was tremendous and we have categorized them by topic and are working to address some of the most pressing and pertinent questions or comments.

As we continue to move forward, we will create additional resources, educational materials, information sharing, graphics, reports, and other materials. We will be working closely with Best Trash North to discuss best practices for their drivers and staff as well as finding ways to be consistent on a weekly basis for pick-up times and treatment of bins and cans used for recycling and trash.

Residents are always able to email WCID110 if they have a question with recycling pick-up or to report an issue.

## THANK YOU TO ALL OF OUR RESIDENTS WHO RESPONDED TO THE SURVEY

Survey data will help us to identify areas of our recycling services that need to be addressed. We have shared this information with Best Trash North.

We are developing action plans for making immediate and long-term improvements to our program and service and hope our residents will continue to, increase participation, or begin to recycle materials that can make a difference.



# Free E-Waste Recycling and Paper Shredding Event

Hosted by WCID110 and Best Trash



**Date:** Saturday, April 13

**Time:** 10 a.m. - Noon



**Where:** Forest Oaks Park Parking Lot off of Cypress Oaks in front of the Forest Oaks Maintenance Building.

## E-Waste Items Accepted

Purple indicates an additional fee

- Flat screen TV's and monitors
- Personal computers
- Keyboards, mouse, speakers
- Camera and video recorders
- Switches, hubs and routers
- Cords and cables
- Game consoles
- Small kitchen appliances
- Computer monitors including LCD, LED, and plasma
- Laptops
- Hard drives
- Car Batteries
- Rechargeable batteries
- Memory chips
- Tape drives
- Printers, copiers and plotters
- Fax machines
- Typewriters
- Electronic medical devices
- PDA's
- Electric tools
- General household electrical items
- Phone systems
- Cell phones and office phones
- Toner cartridges
- Holiday electric decorations
- Power tools
- Electronic toys
- PA's and microphones
- **Tube TV - \$25/unit**
- **CRT Monitor - \$10/unit**

## E-Waste Items Not Accepted

- **Light bulbs**
- **Major appliances**
- **Paint or aerosol containers**
- **Chemicals**
- **Medical Waste**
- **Hazardous Waste**

## Paper Shredding

Park in the side parking lot and carry items to be shredded to the shredding location.  
Cannot drive through the shredding area.



# 2023 RECYCLING DATA FOR WCID110



The data below is taken from monthly consultant reports for residential recycling within WCID110 through 2023.

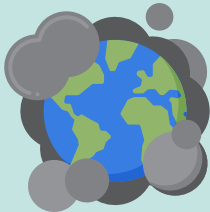
## IMPACT OF RECYCLING ON CONSERVATION OF RESOURCES IN 2023



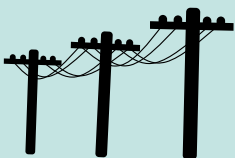
**TREES SAVED**  
3,942



**WATER SAVED**  
1,623,048  
GALLONS



**AIR POLLUTION REDUCED**  
13,912 POUNDS



**ELECTRICITY SAVED**  
950,642 KW  
HOURS



**LANDFILL SPACE SAVED**  
765 CUBIC YARDS



- January - 37,700 lbs
- February - 32,220 lbs
- March - 34,300 lbs
- April - 43,900 lbs
- May - 36,040 lbs
- June - 35,800 lbs
- July - 43,320 lbs
- August - 33,620 lbs
- September - 47,088 lbs
- October - 34,580 lbs
- November - 35,580 lbs
- December - 49,580 lbs
- 2023 Total: 463,728 lbs**
- Down 6.75% from 2022**



# WCID110 Recycling Goals for 2024

## RECYCLE MORE IN '24



### Monthly Goals for Residential Recycling

#### Number of homes recycling

- Increase avg. to 850 per month
- Current avg. is 790 per month

#### Monthly Increase of Recycling Tonnage

- Increase to 22 tons per month
- Current avg. is 19.1 tons per month

#### Monthly Reduction in Trash Tonnage

- Reduce by 3 tons per month
- Current avg. is 199 tons per month.



### Annual Goals for Recycling in WCID110

WCID110 started its recycling program in 2008. In that time we have recycled as much as 602,149 pounds of material and as little as 460,426 pounds. We want to recycle **550,000 pounds in 2024.**



### Tips for recycling in your home

1. Look for items made from recycled materials and recycle them after use.
2. Buy products with less packaging or packaging that can be recycled.
3. Cut plastic and single-use items out of your routine.
4. Drink tap water instead of bottled water. Get a filtered pitcher for your fridge or add a filter for your faucet.
5. Use reusable food containers to store leftovers instead of bags, tin foil, or plastic wrap.
6. Limit use of paper towels for spills and instead use cloth rags that can be washed and reused.
7. Get reusable grocery bags for carrying your groceries.
8. Save plastic grocery bags and place them in a single bag and recycle them.
9. Invest in reusable hygiene products like metal razors with replaceable, recyclable head or toothbrushes with replaceable heads.
10. Store electronics that no longer work and bring them to our annual e-waste recycle event.



Harris County WCDI110  
Forest Oaks Swim and Racquet Club  
Parks and Recreation  
Forest Oaks Park  
Recycling Special Edition Newsletter

19023 Joanleigh Dr.  
Spring, TX 77388  
Office: 281-353-0998  
office@hcwcid110.com  
www.wcid110.com

# RECYCLE MORE IN '24



**RECYCLING PICKED  
UP WEEKLY ON  
SATURDAYS  
HAVE OUT BY 7 A.M.**



**E-WASTE RECYCLING  
AND PAPER  
SHREDDING EVENT:  
SATURDAY, APRIL 13  
FROM 10A.M - NOON**