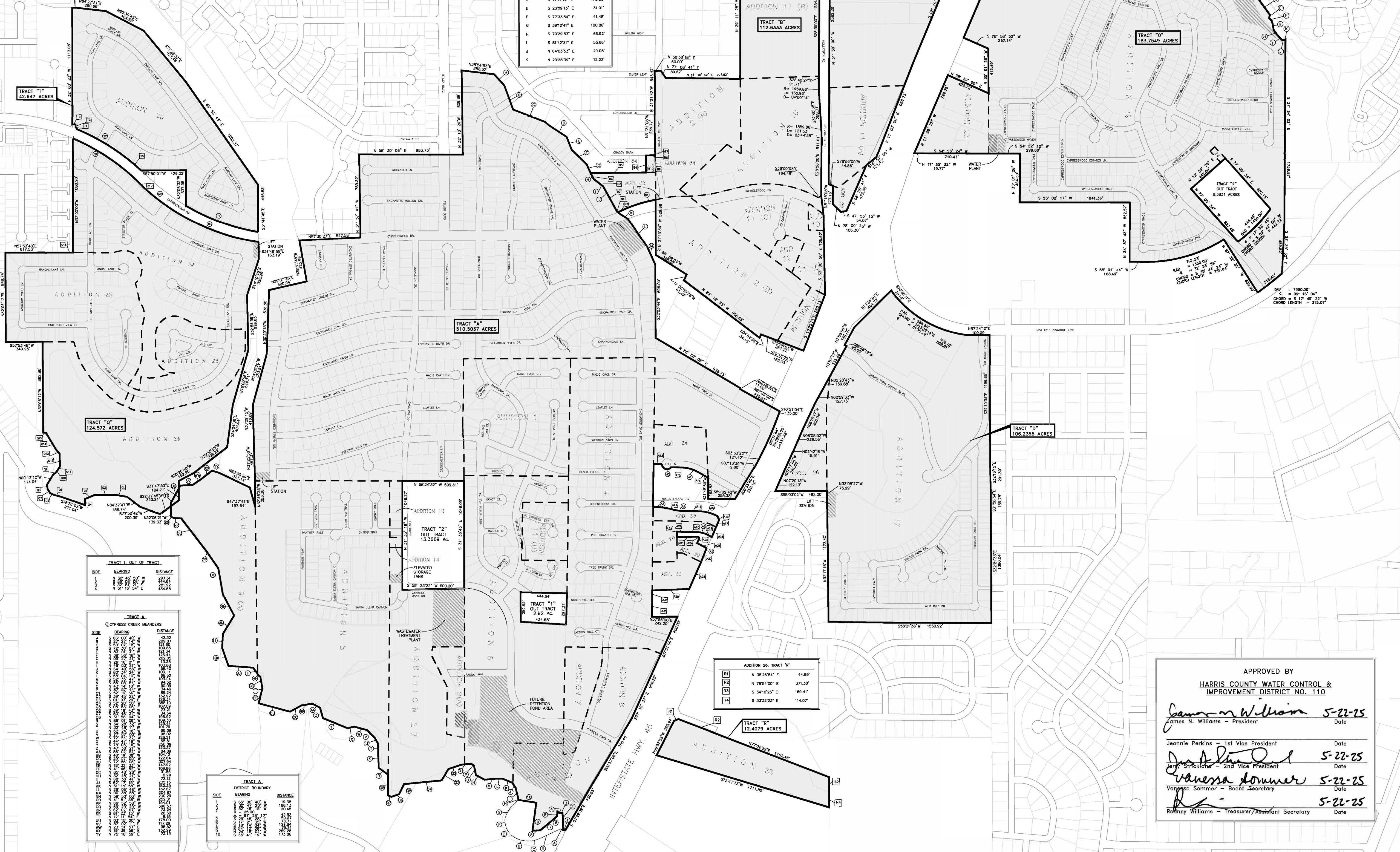


LINE NO.	BEARING	DISTANCE
1	S 87°53'37" W	107.81
2	S 89°50'30" W	83.52
3	S 89°54'34" W	72.79
4	N 72°50'37" E	28.27
5	N 89°50'37" E	100.07
6	S 89°54'34" E	46.84
7	S 89°50'37" E	73.87
8	S 89°54'34" E	100.07
9	S 89°50'37" E	28.27
10	S 89°54'34" E	72.79
11	N 72°50'37" E	28.27
12	N 89°50'37" E	100.07
13	S 89°54'34" E	46.84
14	S 89°50'37" E	73.87
15	S 89°54'34" E	100.07
16	S 89°50'37" E	28.27
17	S 89°54'34" E	72.79
18	N 72°50'37" E	28.27
19	N 89°50'37" E	100.07
20	S 89°54'34" E	46.84
21	S 89°50'37" E	73.87
22	S 89°54'34" E	100.07
23	S 89°50'37" E	28.27
24	S 89°54'34" E	72.79
25	N 72°50'37" E	28.27
26	N 89°50'37" E	100.07
27	S 89°54'34" E	46.84
28	S 89°50'37" E	73.87
29	S 89°54'34" E	100.07
30	S 89°50'37" E	28.27
31	S 89°54'34" E	72.79
32	N 72°50'37" E	28.27
33	N 89°50'37" E	100.07
34	S 89°54'34" E	46.84
35	S 89°50'37" E	73.87
36	S 89°54'34" E	100.07
37	S 89°50'37" E	28.27
38	S 89°54'34" E	72.79
39	N 72°50'37" E	28.27
40	N 89°50'37" E	100.07
41	S 89°54'34" E	46.84
42	S 89°50'37" E	73.87
43	S 89°54'34" E	100.07
44	S 89°50'37" E	28.27
45	S 89°54'34" E	72.79
46	N 72°50'37" E	28.27
47	N 89°50'37" E	100.07
48	S 89°54'34" E	46.84
49	S 89°50'37" E	73.87
50	S 89°54'34" E	100.07

LINE NO.	BEARING	DISTANCE
1	S 87°53'37" W	107.81
2	S 89°50'30" W	83.52
3	S 89°54'34" W	72.79
4	N 72°50'37" E	28.27
5	N 89°50'37" E	100.07
6	S 89°54'34" E	46.84
7	S 89°50'37" E	73.87
8	S 89°54'34" E	100.07
9	S 89°50'37" E	28.27
10	S 89°54'34" E	72.79
11	N 72°50'37" E	28.27
12	N 89°50'37" E	100.07
13	S 89°54'34" E	46.84
14	S 89°50'37" E	73.87
15	S 89°54'34" E	100.07
16	S 89°50'37" E	28.27
17	S 89°54'34" E	72.79
18	N 72°50'37" E	28.27
19	N 89°50'37" E	100.07
20	S 89°54'34" E	46.84
21	S 89°50'37" E	73.87
22	S 89°54'34" E	100.07
23	S 89°50'37" E	28.27
24	S 89°54'34" E	72.79
25	N 72°50'37" E	28.27
26	N 89°50'37" E	100.07
27	S 89°54'34" E	46.84
28	S 89°50'37" E	73.87
29	S 89°54'34" E	100.07
30	S 89°50'37" E	28.27
31	S 89°54'34" E	72.79
32	N 72°50'37" E	28.27
33	N 89°50'37" E	100.07
34	S 89°54'34" E	46.84
35	S 89°50'37" E	73.87
36	S 89°54'34" E	100.07
37	S 89°50'37" E	28.27
38	S 89°54'34" E	72.79
39	N 72°50'37" E	28.27
40	N 89°50'37" E	100.07
41	S 89°54'34" E	46.84
42	S 89°50'37" E	73.87
43	S 89°54'34" E	100.07
44	S 89°50'37" E	28.27
45	S 89°54'34" E	72.79
46	N 72°50'37" E	28.27
47	N 89°50'37" E	100.07
48	S 89°54'34" E	46.84
49	S 89°50'37" E	73.87
50	S 89°54'34" E	100.07

CURVE NO.	RADIUS	DELTA	CHORD BEARING	CHORD LENGTH	ARC LENGTH
1	346.00	287.37	S 73°37'47" W	170.18	171.86
2	55.00	159.97	S 89°50'30" W	83.16	121.57
3	305.00	243.87	S 30°50'30" E	162.77	163.10
4	606.76	1724.97	N 89°54'34" E	121.84	121.84
5	400.00	271.51	N 73°03'56" E	192.82	194.57
6	180.00	309.97	S 89°50'37" E	100.00	104.24
7	248.87	371.54	S 10°54'37" E	8.27	8.28
8	1959.88	2071.79	S 74°43'57" W	880.34	887.40
9	1858.88	2128.37	S 69°23'47" E	698.97	703.08
10	60.00	1484.27	S 16°22'37" E	115.89	158.80
11	180.00	309.97	S 89°50'37" E	100.00	104.24
12	1342.38	2072.47	S 20°54'37" E	474.89	477.22
13	1071.00	2113.79	S 70°41'17" W	394.65	396.87
14	170.00	189.54	S 10°54'37" E	50.00	50.27
15	170.00	271.51	S 89°50'37" E	100.00	104.24
16	2854.71	3154.27	S 84°14'00" W	98.37	102.88
17	380.00	424.28	N 80°33'37" E	278.89	286.30
18	413.90	385.97	N 83°48'27" E	270.14	275.16
19	1022.38	1171.97	N 89°50'37" E	289.50	297.52
20	1344.34	1432.78	N 73°03'56" E	345.42	347.34
21	60.00	217.71	S 74°43'57" W	88.91	100.14
22	1898.88	2071.79	N 83°48'27" E	270.14	275.16
23	1922.38	2171.97	N 89°50'37" E	289.50	297.52
24	1800.00	2071.79	S 89°50'37" E	100.00	104.24
25	2050.00	2239.57	N 81°13'37" E	101.89	105.84
26	1800.00	2071.79	S 89°50'37" E	100.00	104.24
27	1800.00	2071.79	S 89°50'37" E	100.00	104.24
28	1800.00	2071.79	S 89°50'37" E	100.00	104.24
29	1800.00	2071.79	S 89°50'37" E	100.00	104.24
30	1800.00	2071.79	S 89°50'37" E	100.00	104.24
31	1800.00	2071.79	S 89°50'37" E	100.00	104.24
32	1800.00	2071.79	S 89°50'37" E	100.00	104.24
33	1800.00	2071.79	S 89°50'37" E	100.00	104.24
34	1800.00	2071.79	S 89°50'37" E	100.00	104.24
35	1800.00	2071.79	S 89°50'37" E	100.00	104.24
36	1800.00	2071.79	S 89°50'37" E	100.00	104.24
37	1800.00	2071.79	S 89°50'37" E	100.00	104.24
38	1800.00	2071.79	S 89°50'37" E	100.00	104.24
39	1800.00	2071.79	S 89°50'37" E	100.00	104.24
40	1800.00	2071.79	S 89°50'37" E	100.00	104.24

SIDE	BEARING	DISTANCE
A	S 44°18'47" E	27.00
B	S 00°14'48" W	18.00
C	S 40°54'30" E	188.50
D	S 77°03'17" E	139.82
E	S 33°03'17" E	31.97
F	S 77°33'54" E	41.48
G	S 39°14'41" E	100.80
H	S 70°28'57" E	48.82
I	S 81°42'31" E	55.85
J	N 84°02'37" E	28.00
K	N 30°28'37" E	12.50



DESCRIPTION OF AREA	TRACT	AREA IN ACRES	DATE
ORIGINAL DISTRICT (ENHANCED OAKS SECTIONS 2, 3, 4)	A	78.72 (2) 85.27 (3) 77.61 (4)	CREATED ON MAY 9, 1968
ADDITION 1	A	24.62	ANNEXED ON DECEMBER 30, 1974
ADDITION 2(A) 2(B)	A	16.84 23.87 (4)	ANNEXED ON DECEMBER 30, 1974
ADDITION 3	B	2.77	ANNEXED ON DECEMBER 30, 1974
ADDITION 4	A	52.70 (1)	ANNEXED ON JANUARY 1, 1977
ADDITION 5	A	67.14	ANNEXED ON OCTOBER 13, 1981
ADDITION 6	A	52.24	ANNEXED ON OCTOBER 13, 1981
ADDITION 7	A	5.47 (2)	ANNEXED ON OCTOBER 13, 1981
ADDITION 8	A	7.40 (3)	ANNEXED ON OCTOBER 13, 1981
ADDITION 9(A) 9(B) 9(C)	A	18.70 (2.47) 10.63	ANNEXED ON AUGUST 28, 1983
ADDITION 10	B	21.9159 (5)	ANNEXED ON OCTOBER 26, 1983
ADDITION 11(A) 11(B) 11(C) 11(D)	C	10.55 27.85 10.30 5.78	ANNEXED ON JUNE 13, 1984
ADDITION 12	B	1.57	ANNEXED ON NOVEMBER 1, 1984
ADDITION 13	B	0.69	ANNEXED ON DECEMBER 14, 1984
ADDITION 14	A	0.27	ANNEXED ON DECEMBER 12, 1984
ADDITION 15	A	1.2805	ANNEXED ON JANUARY 13, 1993
ADDITION 16	C	4.00	ANNEXED ON JUNE 9, 1993
ADDITION 17	D	100.1307	ANNEXED ON JANUARY 28, 1995
ADDITION 18	E	13.647	ANNEXED ON DECEMBER 10, 1997
	F	3.903	ANNEXED ON DECEMBER 10, 1997
	G	32.230	ANNEXED ON DECEMBER 10, 1997
	H	1.853	ANNEXED ON DECEMBER 10, 1997
	J	12.508	ANNEXED ON DECEMBER 10, 1997
	J2	4.022	ANNEXED ON DECEMBER 10, 1997
	K	10.814	ANNEXED ON DECEMBER 10, 1997
	M	0.271	ANNEXED ON DECEMBER 10, 1997
	N	0.4714	ANNEXED ON DECEMBER 10, 1997
ADDITION 19	O	174.8139	ANNEXED ON DECEMBER 10, 1998
ADDITION 20	M1	0.6572	ANNEXED ON FEBRUARY 10, 1999
	M2	0.6428	ANNEXED ON FEBRUARY 10, 1999
ADDITION 21	P	13.046	ANNEXED ON FEBRUARY 20, 2001
ADDITION 22	C	1.284	ANNEXED ON FEBRUARY 20, 2001
ADDITION 23	M3	2.0329	ANNEXED ON DECEMBER 11, 2002
	O	8.7348	ANNEXED ON DECEMBER 11, 2002
ADDITION 24	A	7.708	ANNEXED ON DECEMBER 23, 2003
	M4	1.6248	ANNEXED ON DECEMBER 23, 2003
	O	0.2063	ANNEXED ON DECEMBER 23, 2003
	Q	80.042	ANNEXED ON DECEMBER 23, 2003
ADDITION 25	Q	44.530	ANNEXED ON MAY 12, 2004
ADDITION 26	D	6.1048	ANNEXED ON MARCH 1, 2006
ADDITION 27	A	27.195	ANNEXED ON OCTOBER 13, 2010
ADDITION 28	R	12.4079	ANNEXED ON DECEMBER 14, 2011
ADDITION 29	J3	3.2840	ANNEXED ON DECEMBER 20, 2012
	T	4.7210	ANNEXED ON DECEMBER 20, 2012
	S	42.641	ANNEXED ON DECEMBER 20, 2012
ADDITION 30	M5	37.7306	ANNEXED ON DECEMBER 9, 2015
	A	1.0104	ANNEXED ON DECEMBER 9, 2015
ADDITION 31	K2	3.1377	ANNEXED ON DECEMBER 14, 2016
ADDITION 32	B	3.5589	ANNEXED ON JULY 19, 2018
ADDITION 33	A	1.5668 2.7230	ANNEXED ON MARCH 11, 2020
	K2	1.00	ANNEXED ON MARCH 11, 2020
ADDITION 34	B	0.3285 AC (8)	ANNEXED ON NOVEMBER 10, 2021
	K2	0.3555 AC	ANNEXED ON NOVEMBER 10, 2021
	M6	6.4430 AC (9)	ANNEXED ON NOVEMBER 10, 2021
ADDITION 35	G2	18.399	ANNEXED ON MAY 22, 2025

(1) ALSO KNOWN AS ENHANCED OAKS SECTION 1
 (2) DOES NOT INCLUDE 0.30 ACRES FOR CYPRESS OAKS OR R.O.W.
 (3) DOES NOT INCLUDE 0.10 ACRES FOR CYPRESSWOOD OR R.O.W.
 (4) DOES NOT INCLUDE ACREAGE FOR CYPRESSWOOD OR R.O.W.
 (5) DOES NOT INCLUDE 9.41 ACRES FOR CYPRESSWOOD OR R.O.W.
 (6) DOES NOT INCLUDE 3.98 ACRES FOR CYPRESSWOOD OR R.O.W.
 (7) DISTRICT BOUNDARY DESCRIPTION PREPARED BASED ON AVAILABLE RECORDS AND DEEDS.
 (8) DOES NOT INCLUDE 0.0026 ACRES FOR CRANDY BARK OR R.O.W.
 (9) DOES NOT INCLUDE 0.071 ACRES FOR CRANDY BARK OR R.O.W.
 TOTAL ACREAGE = 1318.8711

LEGEND
 [Symbol] DISTRICT BOUNDARY
 [Symbol] DISTRICT AREA
 [Symbol] DISTRICT OWNED PROPERTY

HARRIS COUNTY WATER CONTROL AND IMPROVEMENT DISTRICT NO. 110

HARRIS COUNTY, TEXAS

DISTRICT BOUNDARY MAP

MAY 2025



1080 W. Sam Houston Pkwy N. Ste 200
 Houston, Texas 77043-5014
 Ph. 713-461-3530 Fax 713-932-7505

TBPE FIRM #449

