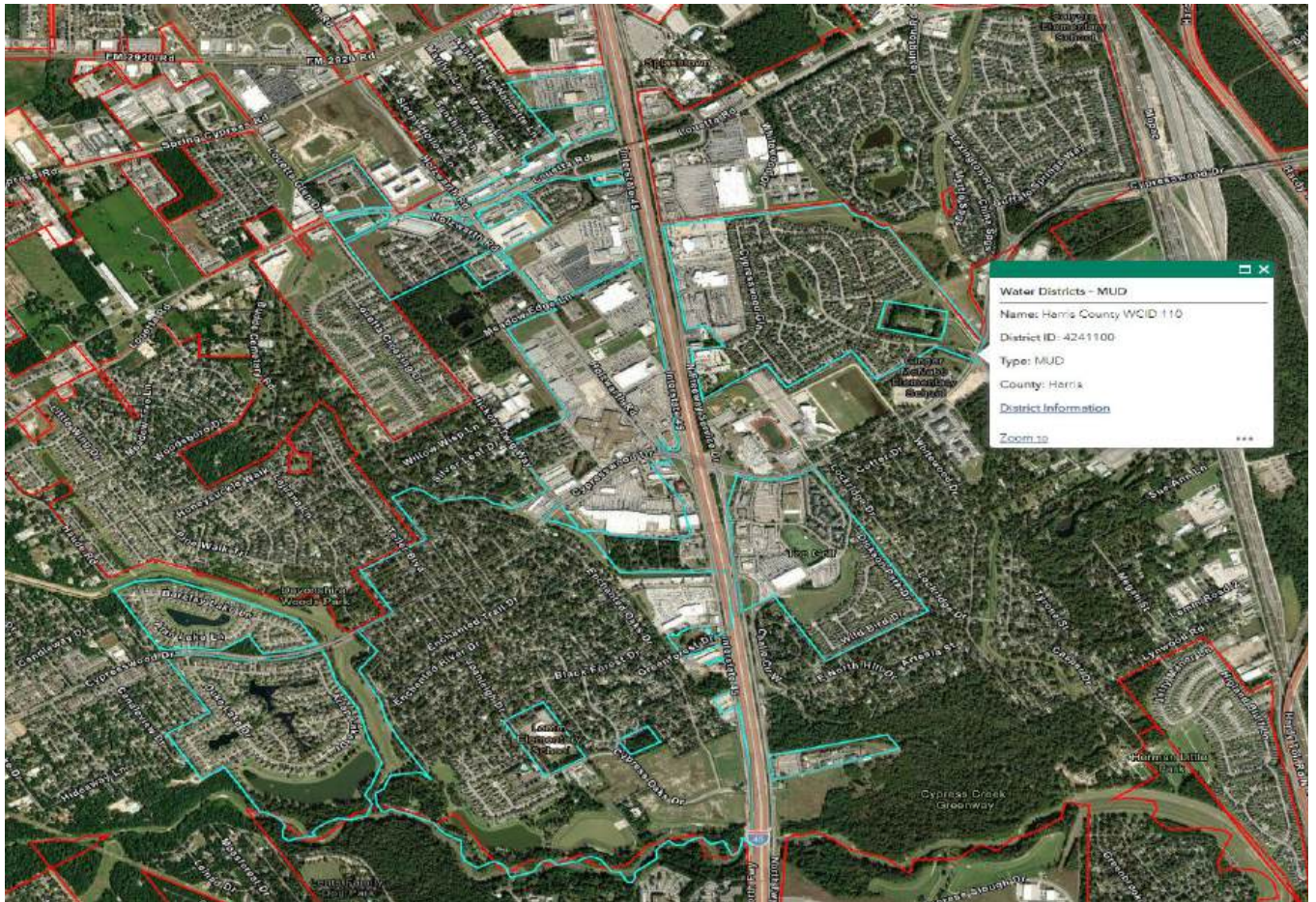




HC WCID 110

Storm Water Management Program

August 13th 2025



Philip Halbert 346-316-6420 phalbert@swstx.com
16110 Hollister Street Houston, Texas 77066
(281) 587-5950 www.swstx.com

1. Services Provided:

a. Center at Spring Park - Top Golf

- i. Mowing & Handwork performed Monthly
- ii. Spring Overseeding & Fertilization - Once (March/April)
- iii. Fall Overseeding & Fertilization - Once (Oct/Nov)
- iv. Clean SWQF & remove floatables Monthly
- v. SWQ inspection recorded Monthly
- vi. Maintain Engineering Certification for SWQ feature Annually
 - 1. Permit # 1602240086-SWBI-001 (08/27)

b. Cypress Forest Reserve C / D / E

- i. Mowing & Handwork performed Monthly
- ii. Spring Overseeding & Fertilization - Once (March/April)
- iii. Fall Overseeding & Fertilization - Once (Oct/Nov)
- iv. Clean Pilot Channels performed Monthly
- v. Clean SWQF & remove floatables Monthly
- vi. SWQ inspection recorded Monthly
- vii. Maintain Engineering Certification for SWQ feature Annually
 - 1. Permit # 2102110015-MUD-001

c. Cypresswood Lakes 2 / 3 / 4

- i. Mowing & Handwork performed Monthly
- ii. Spring Overseeding & Fertilization - Once (March/April)
- iii. Fall Overseeding & Fertilization - Once (Oct/Nov)

d. Cypresswood Lakes 5 - SWQ Feature Only

- i. Clean SWQF & remove floatables Monthly
- ii. SWQ inspection recorded Monthly
- iii. Maintain Engineering Certification for SWQ feature Annually
 - 1. Permit # 8-0002080-0

e. Haas Toyota

- i. Mowing & Handwork performed Monthly
- ii. Spring Overseeding & Fertilization - Once (March/April)
- iii. Fall Overseeding & Fertilization - Once (Oct/Nov)
- iv. Clean pilot channel Monthly

Services Provided:

a. Lowes

- i. Mowing & Handwork performed Monthly
- ii. Spring Overseeding & Fertilization - Once (March/April)
- iii. Fall Overseeding & Fertilization - Once (Oct/Nov)
- iv. Clean Pilot Channel performed Monthly
- v. Clean SWQF & remove floatables Monthly
- vi. SWQ inspection recorded Monthly
- vii. Maintain Engineering Certification for SWQ feature Annually
 1. Permit # 1708150171-SWDO-001

3. Discussion

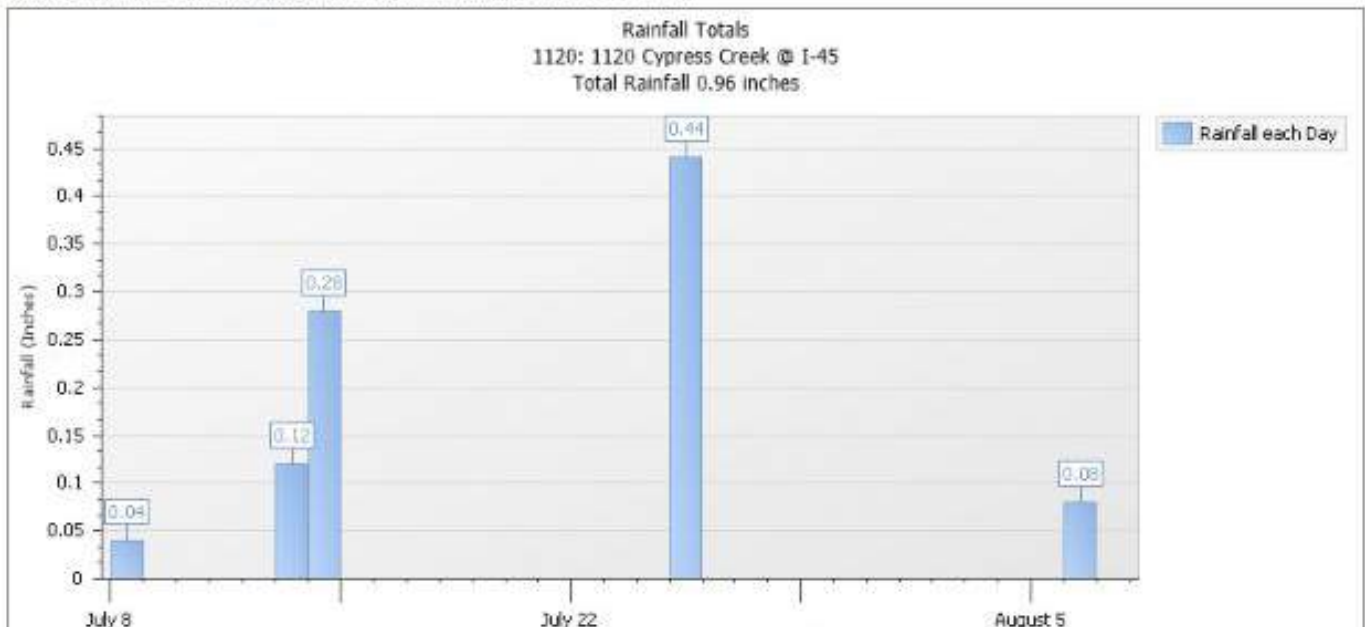
- a. Nothing at this time.

4. Proposed Action Items

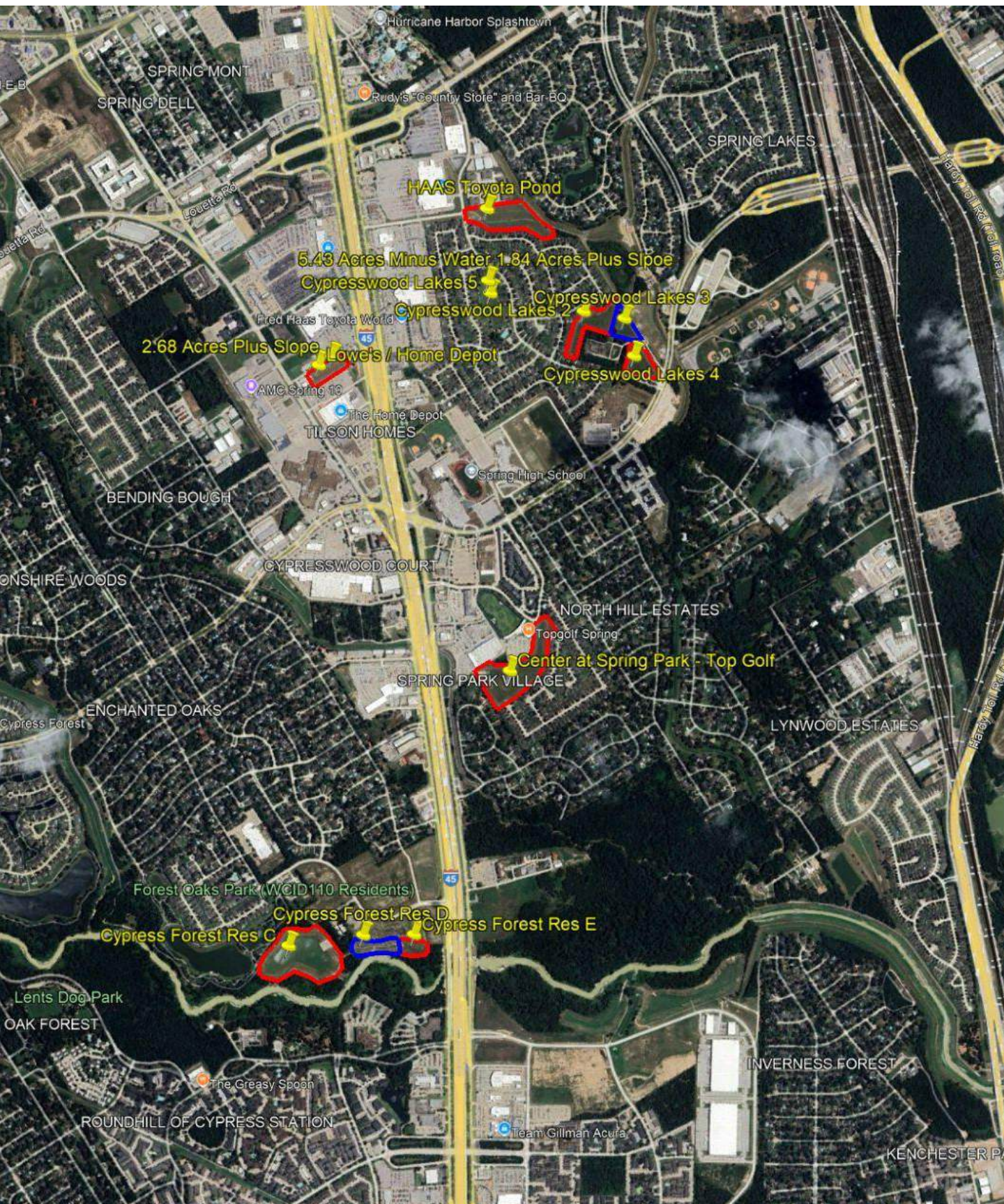
- a. **Nothing at this time.**

Monthly Rainfall

Showing rainfall totals from 7/8/2025 12:00 AM to 8/7/2025 2:11 PM CDT



Harris County WCID 110







Aug 7, 2025 12:47:52 P
19302 Interstate
Spr
Harris Cou
Tex



Aug 7, 2025 12:47:55 P
19302 Interstate
Spr
Harris Cou
Tex



Aug 7, 2025 12:50:1
19139 Center Park
S
Harris C



Aug 7, 2025 12:50:2
19139 Center Park
S
Harris C



Aug 7, 2025 12:53:27 P
19415 Dickson Park Dr
Spr
Harris Cou
Tex



Aug 7, 2025 12:53:32 P
19415 Dickson Park Dr
Spr
Harris Cou
Tex

Cypress Forest Reserve C





Aug 7, 2025 12:34:29 PM
Red T
Spr
Harris Cou
Tex



Aug 7, 2025 12:34:33 PM
Red T
Spr
Harris Cou
Tex



Aug 7, 2025 12:35:58 PM
400 Randal W
Spr
Harris Cou
Tex



Aug 7, 2025 12:36:03 PM
400 Randal W
Spr
Harris Cou
Tex



Aug 7, 2025 12:37:19 PM
400 Randal W
Spr
Harris Cou
Tex



Aug 7, 2025 12:37:32 PM
400 Randal W
Spr
Harris Cou
Tex

Cypress Forest Reserve D & E Detention Ponds



Cypress Forest Reserve D

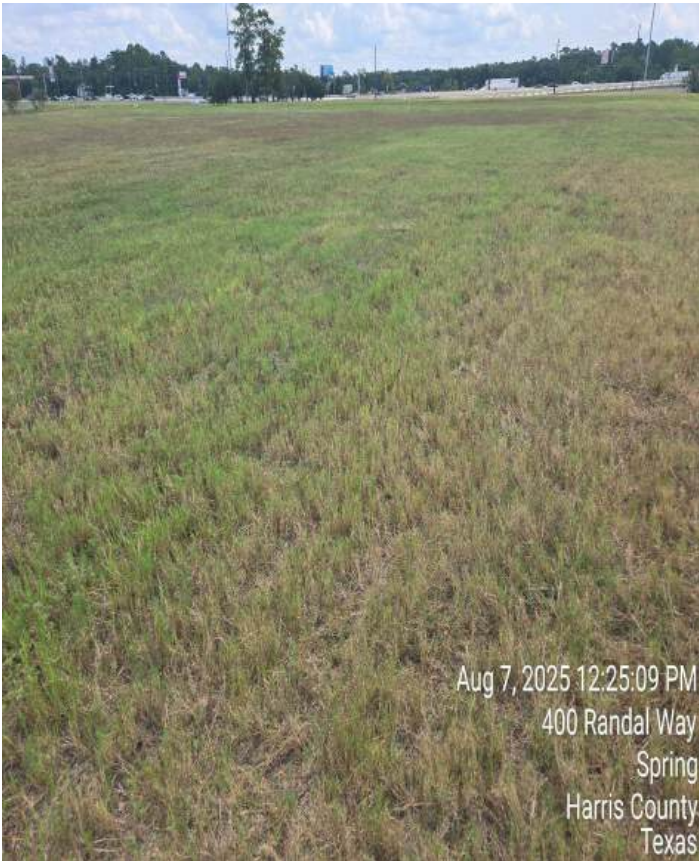




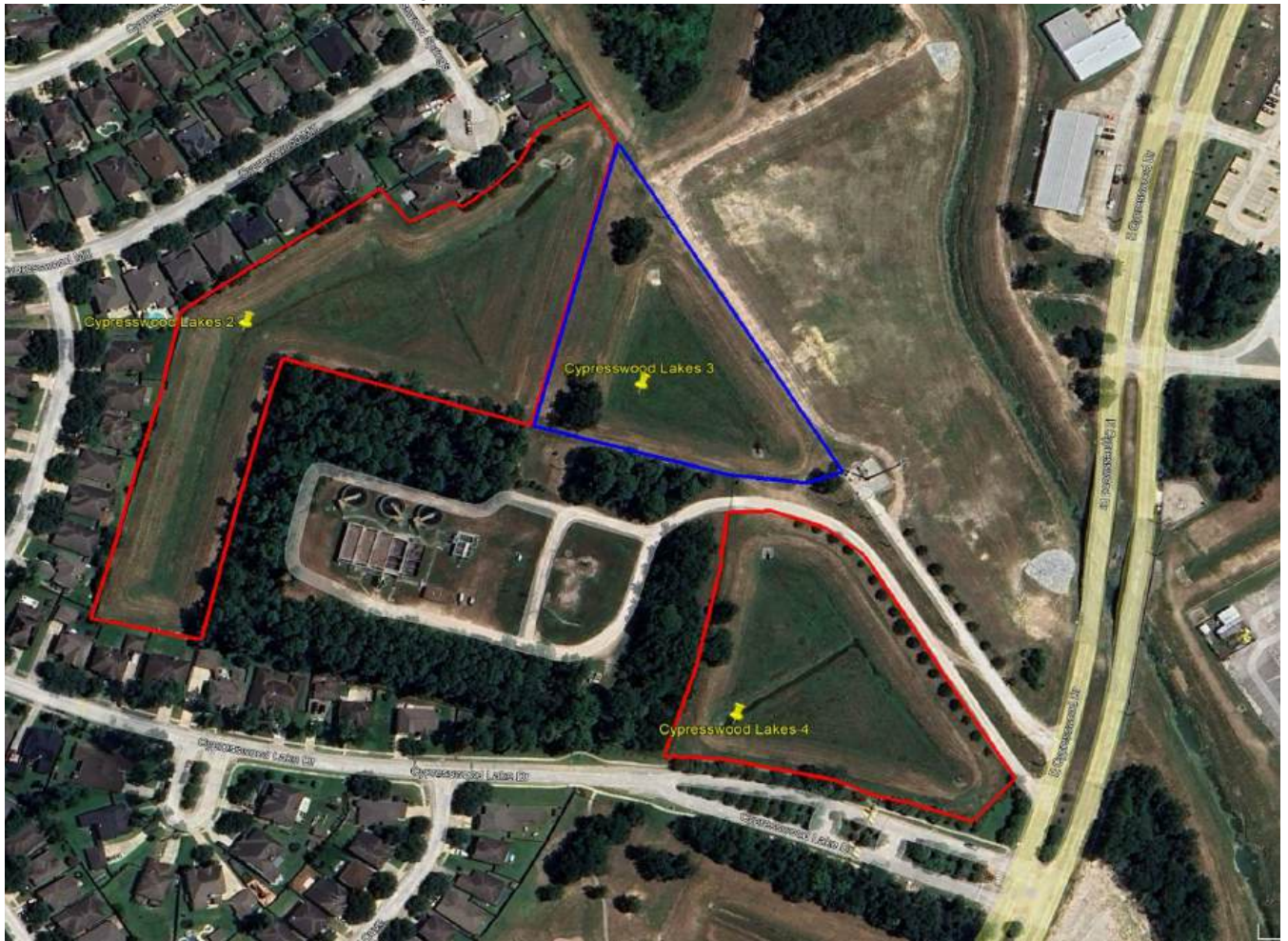
Cypress Forest Reserve E



Cypress Forest Reserve D & E Lots



Cypresswood Lakes 2 / 3 / 4



Cypresswood Lakes 2





Cypresswood Lakes 3



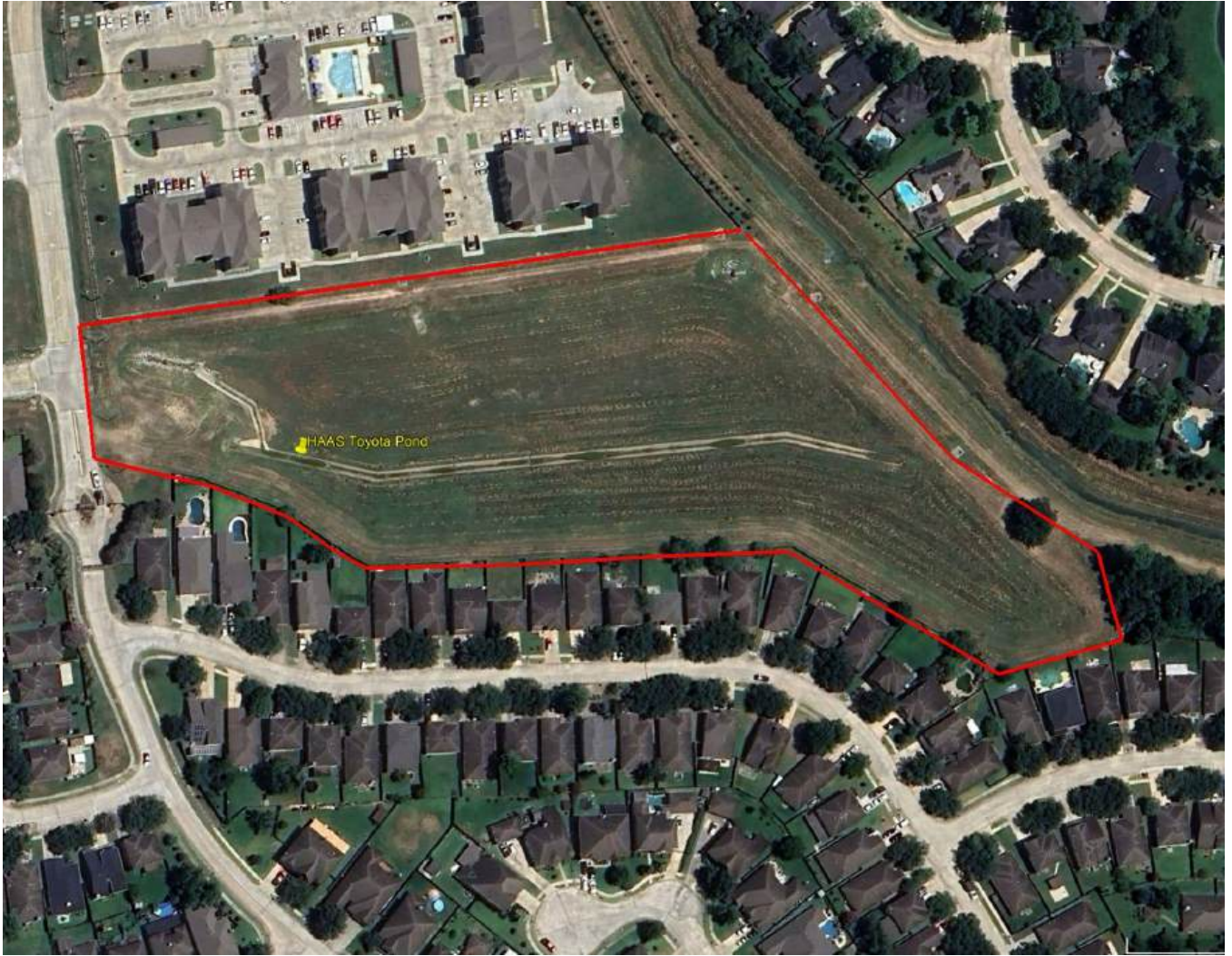
Cypresswood Lakes 4



Cypresswood Lakes Detention Pond 5 - SWQF Only



HAAS Toyota Detention Pond





Lowes / Home Depot Detention Pond





Mics Inspection Photos





4 TYPES OF SEEDING & FERTILIZATION



01

OVERSEEDING

Refreshes and thickens existing turf, filling in bare spots and improving coverage without the need for full site preparation.

02

HYDROMULCH SEEDING

A slurry of mulch and tackifier sprayed over the soil to protect seed, retain moisture, and provide excellent erosion control on slopes and open areas.

03

BROADCAST SEEDING

A simple, cost-effective method to spread seed evenly over small or irregular areas, often paired with mulch for better germination and soil stability.

04

DRILL SEEDING

Places seed directly into the soil for optimal contact and deep root growth, making it ideal for large open spaces and native grass restoration.

WHY IT MATTERS?

Healthy vegetation is your first line of defense against soil loss. By establishing strong root systems, you stabilize slopes, protect pond banks, and reduce runoff—saving on costly repairs and improving long-term site sustainability.



281-587-5950



INFO@SWSTX.COM